

ThinkTouchScreen

**10" - 240", 10 - 50 Touch Points
Capacitive Touch Screen Solution**

**XTx Series
Version 1.2**

The information given in this document is carefully checked and believed to be reliable. ThinkTouchScreen reserves the right to make changes in product or specification at any time and without further notice. ThinkTouchScreen products are not intended for use in systems in which failures of product could result in personal injury. All mentioned trademarks are registered trademarks of their owner.

Large Size Projective Capacitance Touch Technology



Our super-large capacitive touch technology has continuously penetrated into all aspects of the enterprise touch market. From digital new media, game entertainment, future education, smart city, oxygen dio, smart home and a wide range of applications, it has become one of the key technologies for traditional enterprises to embrace the Internet.

Characteristics of Capacitive Touch Foil:

- 95% Full Transparency
- Customise Any Size Range From 10 inch - 240 inch
- Light Weight, Suitable To Be Laminated To Glass/Acrylic
- Transparent, No Frame
- Accurate Positioning
- No Mechanical Or Pressure-Sensitive Elements, Durable And Stable
- Not Sensitive To Outer Light, The Change Of Light Would Not Affect
- Multi-Touch Points (Up To 50 Touch Points)
- Simple & Quick To Install
- Gass Up To 12mm Thick
- High Resolution Controller

Capacitive Touch Foil Series

XTM Series



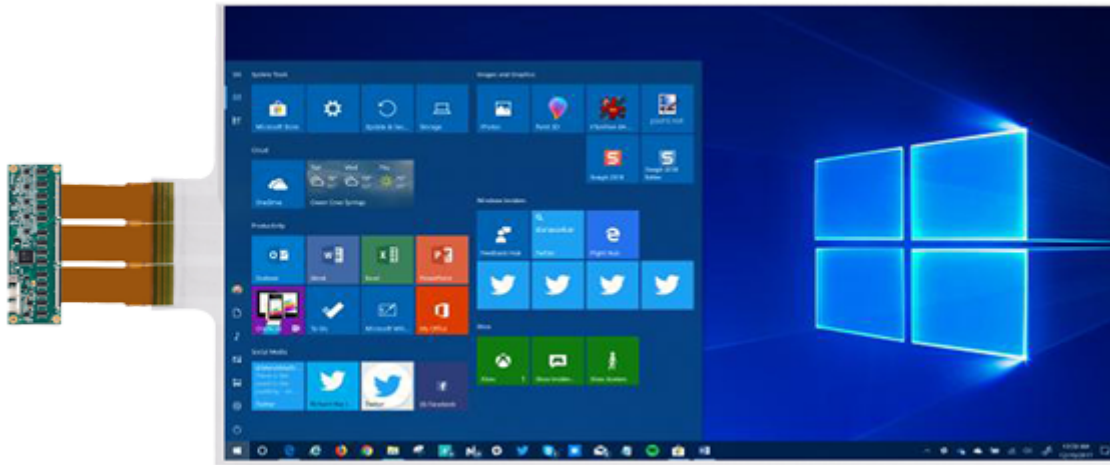
XTM focuses on 10.1-32 inches, suitable for industrial touch screen, query machine and other fields. In addition to the general touch screen, the product has strong penetration, good waterproof effect, stability and reliability. In the field of industrial control, glass is thicker, waterproof and many other requirements, while the stability requirements are very strong, XTM is the best choice.

XTA Series



XTA Series channel 152, generally used for 43-55 inches, suitable for touch module, digital signage, outdoor advertising machine, game entertainment, new retail and other application scenarios. These application scenarios generally require stability and easy maintenance. Touch film XTA series is the first choice. Among them, game and entertainment scenes generally require more points and better waterproofing. XTA can be upgraded to 40 points, and large areas of water can also be touched.

XTB Series



XTB Series channel number 222, generally used for 55-86 inches, suitable for early childhood education all-in-one machine, conference board, intelligent blackboard and other fields, these high-frequency use of the scene in addition to the extremely high requirements for stability, writing fluency, response speed, maintainability are valued. XTB series support broken line repair, remote upgrade, strong stability, good writing fluency, fast response, easy maintenance, report rate of 120, is the best choice for this application scenario.

XTC Series

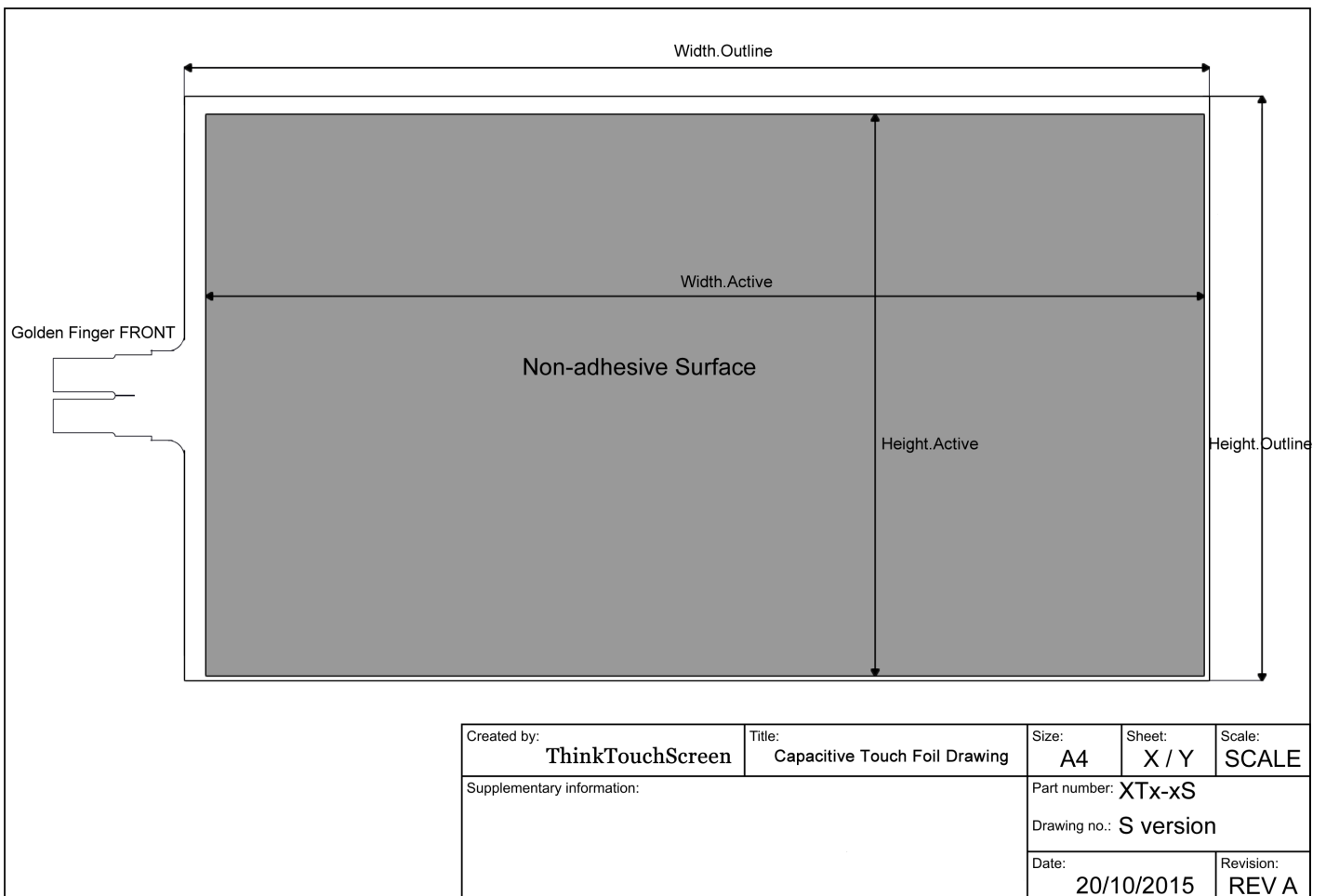
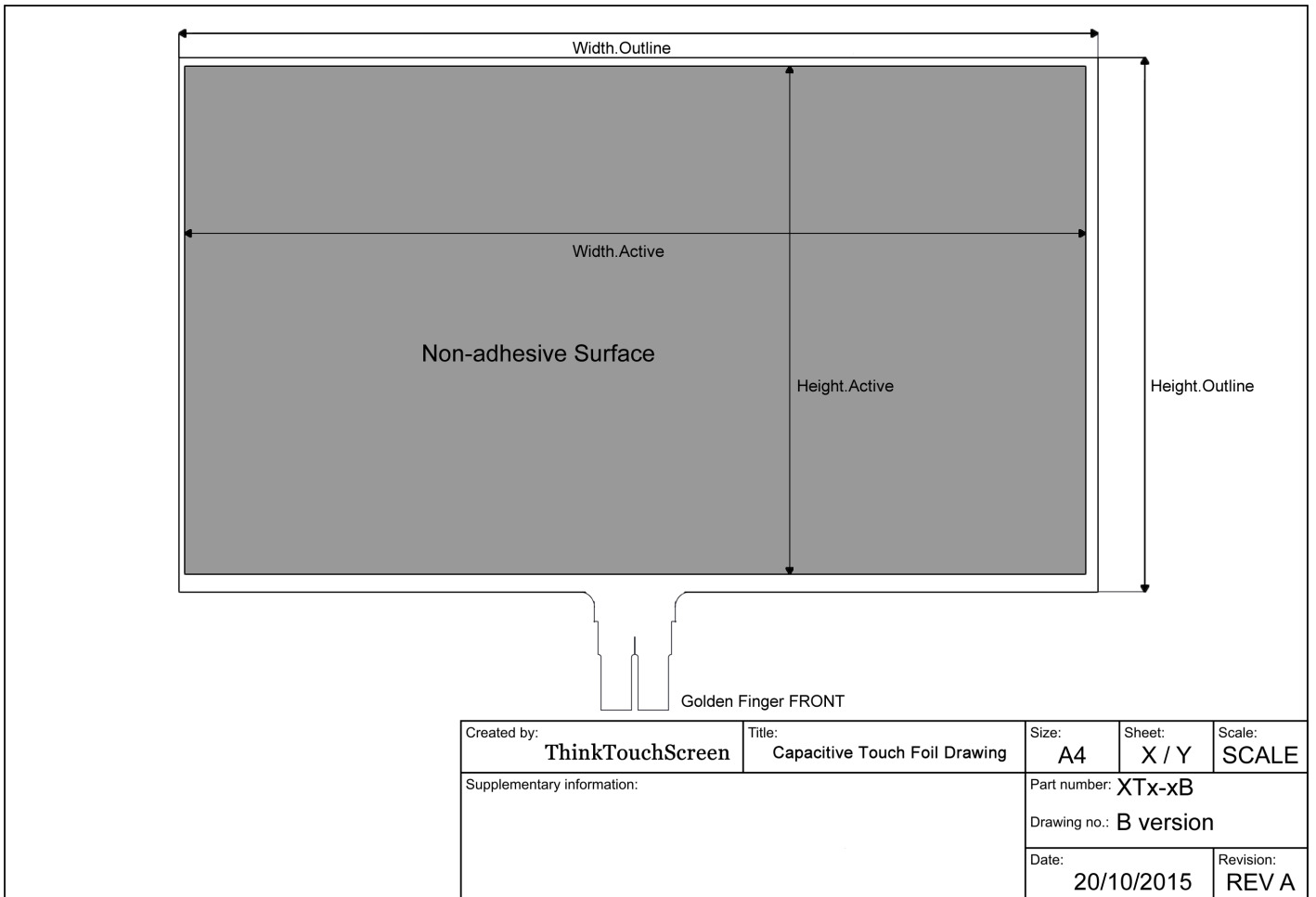


XTC Series channel number 376, suitable for 75 or more sizes, can also be used in 43-65 inch object recognition field. In order to ensure that the experience of large and medium-sized products reaches the first-class level, XTC has greatly improved the accuracy, speed and signal-to-noise ratio. At the same time, for the differential application of object recognition, XTC not only achieves ultra-high precision, but also achieves the docking with marker through protocol, which is the only one in China.

XTx Series Technical Specification

Series	XTM	XTA	XTB	XTC
Touch Points	12	20	30	40
Sizes	10.1" ~ 32"	42" ~ 65"	55" ~ 86"	86" ~ 200"
Deviation	≤ 0.5mm	≤ 0.5mm	≤ 0.5mm	≤ 0.5mm
Sensor	TX: 24(MAX) RX: 48(MAX)	TX: 56(MAX) RX: 96(MAX)	TX: 80 RX: 142	TX: 136 RX: 240
FPS	130	120	120	
Power Consumption	1W	0.5W	1.15W	
Driver	No need			
Windows	Windows 7/Windows 8/Windows 10			
Andriod	Kernel 3.10 or Higher			
Linux	Kernel 3.10 or Higher			
Interface	USB2.0, UART			
Power Supply	USB (5V+/-5%DC)			
Customize	Customizable			
Waterproof	YES			
Calibration	Software Calibration			
Certificates	CE, ilac-MRA, CNAS, CAL, CMA, FCC, ROHS, ISO			
Packing List	Touch Foil*1, Controller*1, USB Line*1			
Thickness	≤ 200um			
Transmittance	> 93%			
Voltage	5V			
Transmission	USB2.0			
Transmit Distance	≤ 50m (Add USB Signal Amplifier, etc.)			
Safe Distance	2mm (Distance Between LCD & Foil)			
Operating Temperature	-20°C ~ 70°C			
Storage Temperature	-20°C ~ 80°C			
Ambient Lightness	Full-angle Anti-glare Illumination			
Touch Gesture	Click, Drag, Zoom, Rotate			
Sensing Range	≤ 10mm			
Drivers	Windows/Linux/Android			

XTx Series Drawing and Dimensions



XTx Series Order NO.

Model Number	Size	Ratio	Points	Width.Outline (mm)	Height.Outline (mm)	Width.Active (mm)	Height.Active (mm)	FPC Side
XTM-15S	15	16:9	12	355.52	207.84	332.07	186.79	Left/Right
XTM-15B	15	16:9	12	350.52	208.44	332.07	186.79	Bottom
XTM-15.6S	15.6	16:9	12	368.80	215.31	345.35	194.26	Left/Right
XTM-15.6B	15.6	16:9	12	363.80	215.91	345.35	194.26	Bottom
XTM-15S-R43	15	4:3	12	328.25	249.65	304.80	228.60	Left/Right
XTM-15S-R1610	15	16:10	12	346.54	222.98	323.09	201.93	Left/Right
XTM-15B-R43	15	4:3	12	323.25	250.25	304.80	228.60	Bottom
XTM-15B-R1610	15	16:10	12	341.54	223.58	323.09	201.93	Bottom
XTM-17S-R43	17	4:3	12	368.89	280.13	345.44	259.08	Left/Right
XTM-17S-R1610	17	16:10	12	389.62	249.90	366.17	228.85	Left/Right
XTM-17S	17	16:9	12	399.80	232.74	376.35	211.69	Left/Right
XTM-17B-R43	17	4:3	12	363.89	280.73	345.44	259.08	Bottom
XTM-17B-R1610	17	16:10	12	384.62	250.50	366.17	228.85	Bottom
XTM-17B	17	16:9	12	394.80	233.19	376.35	211.69	Bottom
XTM-18.5S	18.5	16:9	12	433.00	251.42	409.55	230.37	Left/Right
XTM-18.5B	18.5	16:9	12	428.00	251.87	409.55	230.37	Bottom
XTM-19S-R43	19	4:3	12	402.45	324.05	379.00	303.00	Left/Right
XTM-19S-R1610	19	16:10	12	432.69	276.83	409.24	255.78	Left/Right
XTM-19S	19	16:9	12	444.07	257.65	420.62	236.60	Left/Right
XTM-19B-R43	19	4:3	12	397.45	324.50	379.00	303.00	Bottom
XTM-19B-R1610	19	16:10	12	427.69	277.28	409.24	255.78	Bottom
XTM-19B	19	16:9	12	439.07	258.10	420.62	236.60	Bottom
XTM-21.5S-R43	21.5	4:3	12	460.18	348.71	436.88	327.66	Left/Right
XTM-21.5S-R1610	21.5	16:10	12	486.54	310.48	463.09	289.43	Left/Right
XTM-21.5S	21.5	16:9	12	499.42	288.78	475.97	267.73	Left/Right
XTM-21.5B-R43	21.5	4:3	12	455.33	349.16	436.88	327.66	Bottom
XTM-21.5B-R1610	21.5	16:10	12	481.54	310.93	463.09	289.43	Bottom
XTM-21.5B	21.5	16:9	12	494.42	289.23	475.97	267.73	Bottom
XTM-23.6S-R43	23.6	4:3	12	502.85	380.71	479.55	359.66	Left/Right
XTM-23.6S-R1610	23.6	16:10	12	531.77	338.75	508.32	317.70	Left/Right
XTM-23.6S	23.6	16:9	12	545.91	314.93	522.46	293.88	Left/Right

XTM-23.6B-R43	23.6	4:3	12	498.00	381.16	479.55	359.66	Bottom
XTM-23.6B-R1610	23.6	16:10	12	526.77	339.20	508.32	317.70	Bottom
XTM-23.6B	23.6	16:9	12	540.91	315.38	522.46	293.88	Bottom
XTM-24S-R43	24	4:3	12	510.98	386.81	487.68	365.76	Left/Right
XTM-24S-R1610	24	16:10	12	540.24	344.14	516.94	323.09	Left/Right
XTM-24S	24	16:9	12	554.76	319.91	531.31	298.86	Left/Right
XTM-24B-R43	24	4:3	12	506.13	387.26	487.68	365.76	Bottom
XTM-24B-R1610	24	16:10	12	535.39	344.59	516.94	323.09	Bottom
XTM-24B	24	16:9	12	549.76	320.36	531.31	298.86	Bottom
XTM-27S-R43	27	4:3	12	571.94	432.53	548.64	411.48	Left/Right
XTM-27S-R1610	27	16:10	12	604.86	384.52	581.56	363.47	Left/Right
XTM-27S	27	16:9	12	621.03	357.27	597.73	336.22	Left/Right
XTM-27B-R43	27	4:3	12	567.09	432.98	548.64	411.48	Bottom
XTM-27B-R1610	27	16:10	12	600.01	384.97	581.56	363.47	Bottom
XTM-27B	27	16:9	12	616.18	357.72	597.73	336.22	Bottom
XTM-32S-R43	32	4:3	12	673.54	508.73	650.24	487.68	Left/Right
XTM-32S-R1610	32	16:10	12	712.55	451.83	689.25	430.78	Left/Right
XTM-32S	32	16:9	12	731.72	419.53	708.42	398.48	Left/Right
XTM-32B-R43	32	4:3	12	668.69	509.18	650.24	487.68	Bottom
XTM-32B-R1610	32	16:10	12	707.70	452.28	689.25	430.78	Bottom
XTM-32B	32	16:9	12	726.87	419.98	708.42	398.48	Bottom
XTA-32S-R43	32	4:3	20	684.59	515.93	650.24	487.68	Left/Right
XTA-32S-R1610	32	16:10	20	723.75	459.03	689.25	430.78	Left/Right
XTA-32S	32	16:9	20	742.92	426.73	708.42	398.48	Left/Right
XTA-32B-R43	32	4:3	20	673.49	519.03	650.24	487.68	Bottom
XTA-32B-R1610	32	16:10	20	712.50	461.98	689.25	430.78	Bottom
XTA-32B	32	16:9	20	731.67	429.68	708.42	398.48	Bottom
XTA-42S-R43	42	4:3	20	887.64	668.33	853.44	640.08	Left/Right
XTA-42S-R1610	42	16:10	20	938.99	593.65	904.64	565.40	Left/Right
XTA-42S	42	16:9	20	964.15	551.26	929.80	523.01	Left/Right
XTA-42B-R43	42	4:3	20	876.69	671.28	853.44	640.08	Bottom
XTA-42B-R1610	42	16:10	20	927.89	596.60	904.64	565.40	Bottom
XTA-42B	42	16:9	20	953.05	554.21	929.80	523.01	Bottom

XTB-98B	98	16:9	30	2196.38	1258.46	2169.53	1220.36	Bottom
XTB-100S-R1610	100	16:10	30	2196.82	1381.35	2153.92	1346.20	Left/Right
XTB-100S	100	16:9	30	2256.85	1280.41	2213.80	1245.26	Left/Right
XTB-100B-R1610	100	16:10	30	2180.77	1384.30	2153.92	1346.20	Bottom
XTB-100B	100	16:9	30	2240.65	1283.36	2213.80	1245.26	Bottom
XTB-110S-R1610	110	16:10	30	2196.82	1381.35	2153.92	1346.20	Left/Right
XTB-110SN-R1610	110	16:10	30	2402.91	1508.92	2369.31	1480.82	Left/Right
XTB-110SN	110	16:9	30	2468.78	1397.89	2435.18	1369.79	Left/Right
XTB-110S	110	16:9	30	2478.08	1404.94	2435.18	1369.79	Left/Right
XTB-110B-R1610	110	16:10	30	2180.77	1384.30	2153.92	1346.20	Bottom
XTB-110BN-R1610	110	16:10	30	2392.21	1511.12	2369.31	1480.82	Bottom
XTB-110BN	110	16:9	30	2458.08	1400.09	2435.18	1369.79	Bottom
XTB-110B	110	16:9	30	2462.03	1407.74	2435.18	1369.79	Bottom
Remark:	* Larger than 110 inches can only be customized.							